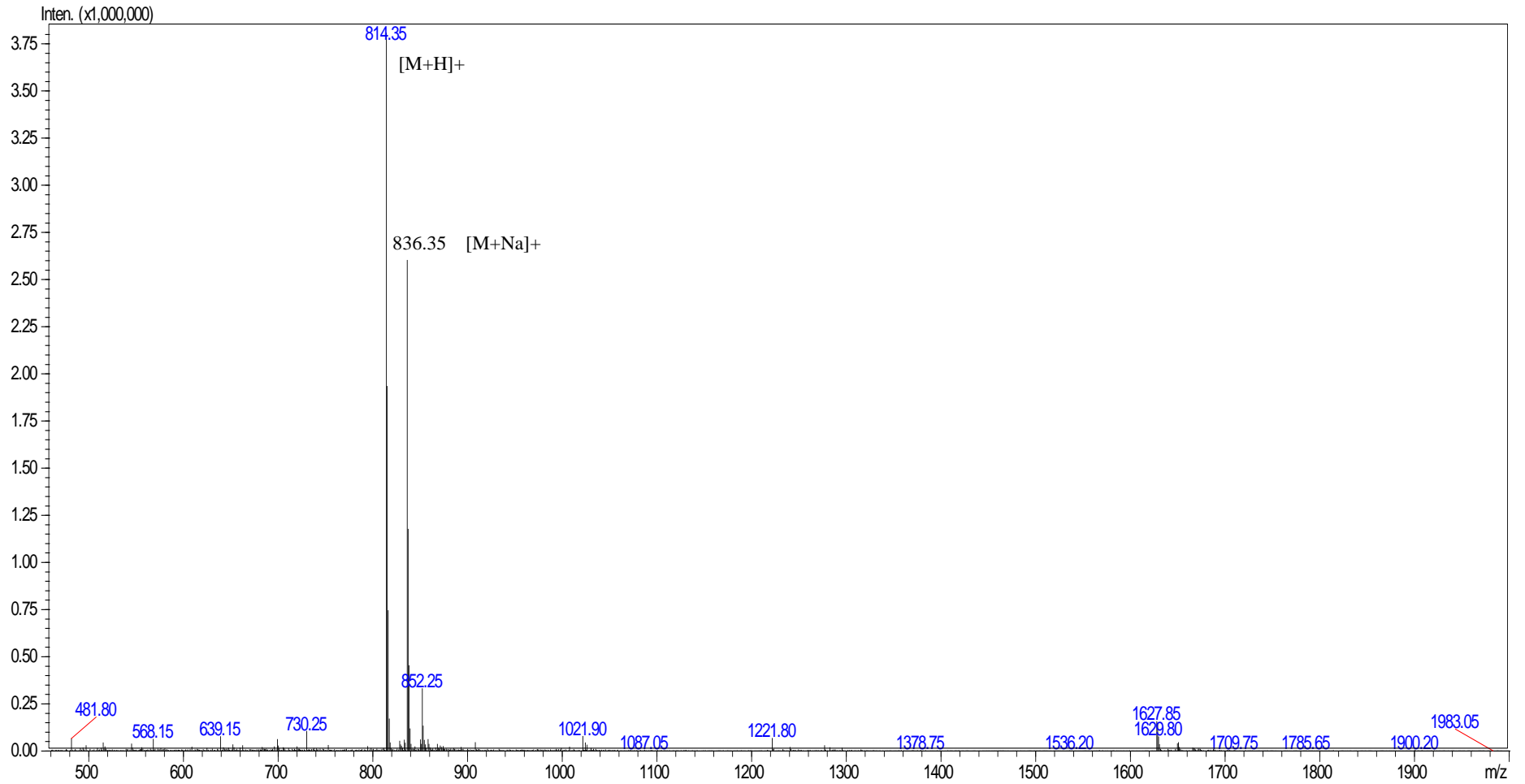


# MS Spectrum

Positive



Data and Time : 2019/4/25  
Sample : Semax MP-7  
Inj. Volume : 1.000  
Mw : 813.92  
Lot No. : P190415-MX173044

Probe :ESI  
Nebulizer Gas Flow :1.5L/min  
CDL : -20.0v  
CDL Temp :250°C  
Block Temp :400°C  
Probe bias : -4.5kv  
Detector :1.2kv  
T.Flow :0.2ml/min  
B.conc :50%H2O/50%ACN