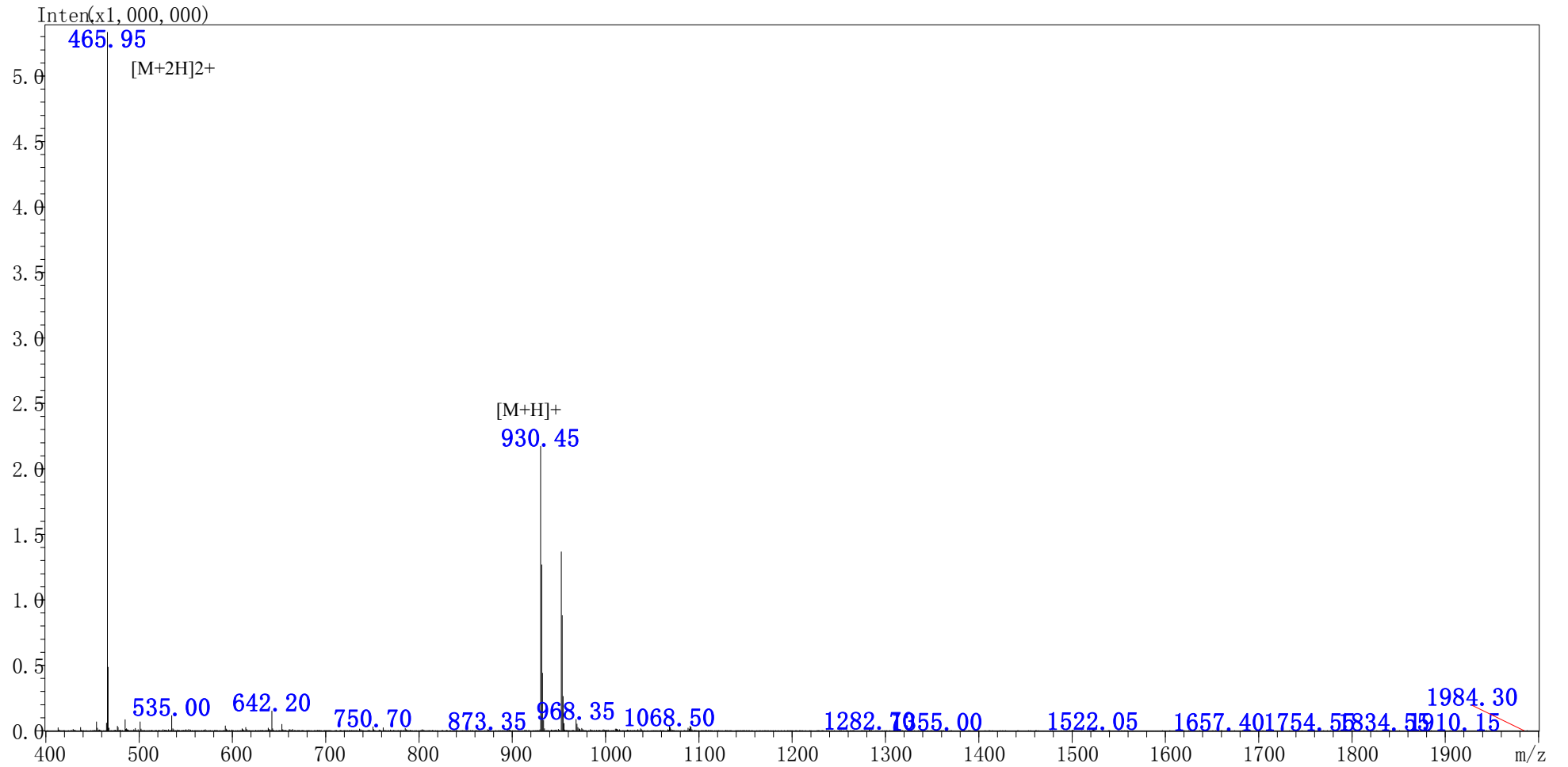


MS Spectrum

Positive



Data and Time : 2022/4/13
Sample : GK-7-NH2
Inj. Volume : 1.000
Mw : 930.06
Lot No. : P220331-YS488708

Probe : ESI
Nebulizer Gas Flow : 1.5L/min
CDL : -20.0v
CDL Temp : 250°C
Block Temp : 400°C
Probe bias : -4.5kv
Detector : 1.2kv
T.Flow : 0.2ml/min
B.conc : 50%H2O/50%ACN