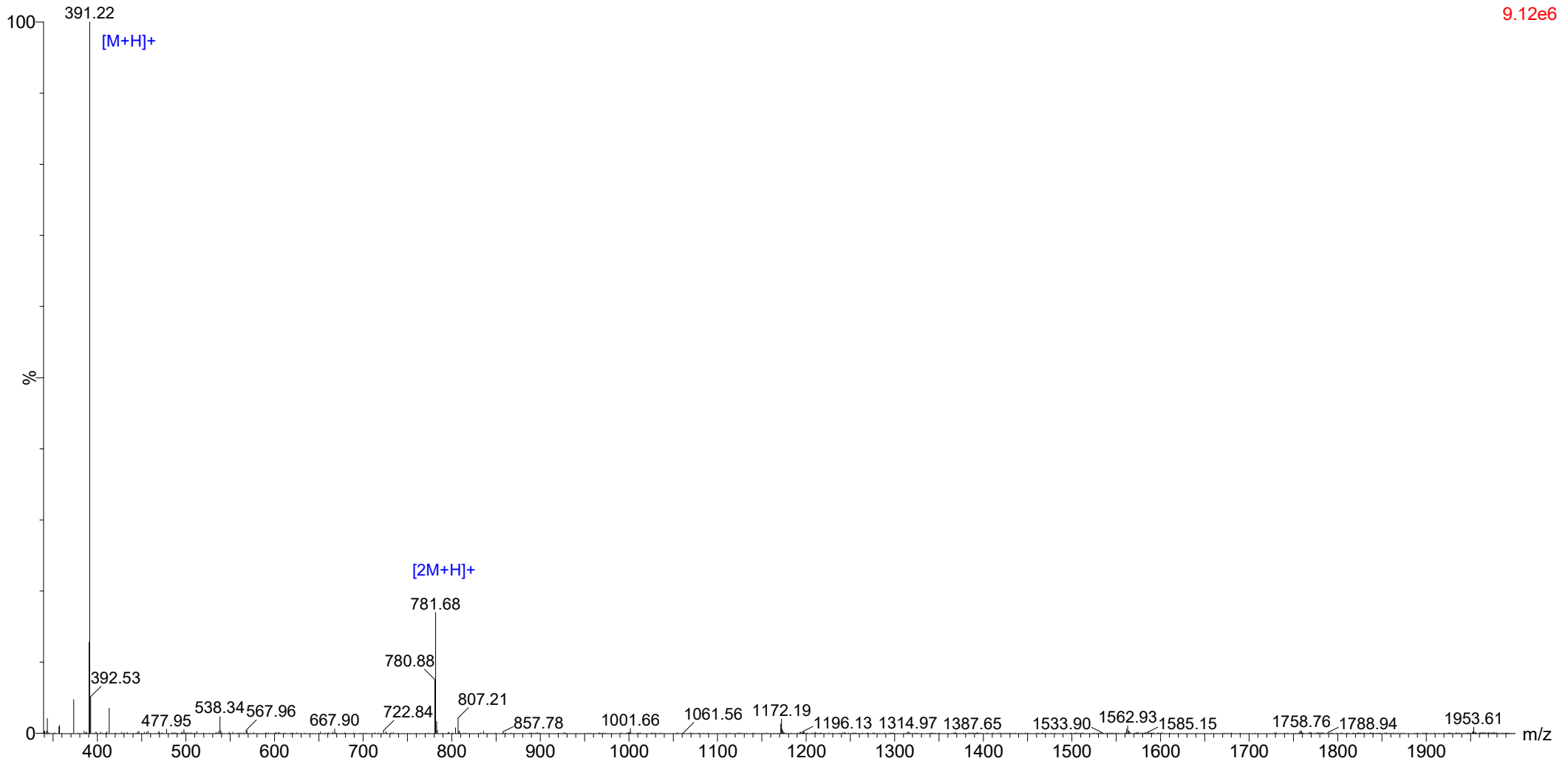


Mass Spectrometry Report

9.12e6



Sample Information 2021-7-24 14::22:56

Injection Volume : 1.00µl

Sample: Epitalon 197902

M.W.: 390.35

Lot. No.: P210226-MX197902

Probe:

ESI

Probe Bias:

+4.5kv

Nebulizer Gas Flow:

1.5L/min

Detector:

1.5kv

CDL:

-20.0v

T. Flow:

0.2ml/min

CDL Temp.:

250°C

B. Conc.:

50%H2O/50%ACN

Block Temp.:

200°C