

Sample ID:858349 Lot#:CS-04-00664

Mobile Phase:A:0.1%TFA in H2O

B:0.09%TFA in (80%ACN+20%H2O)

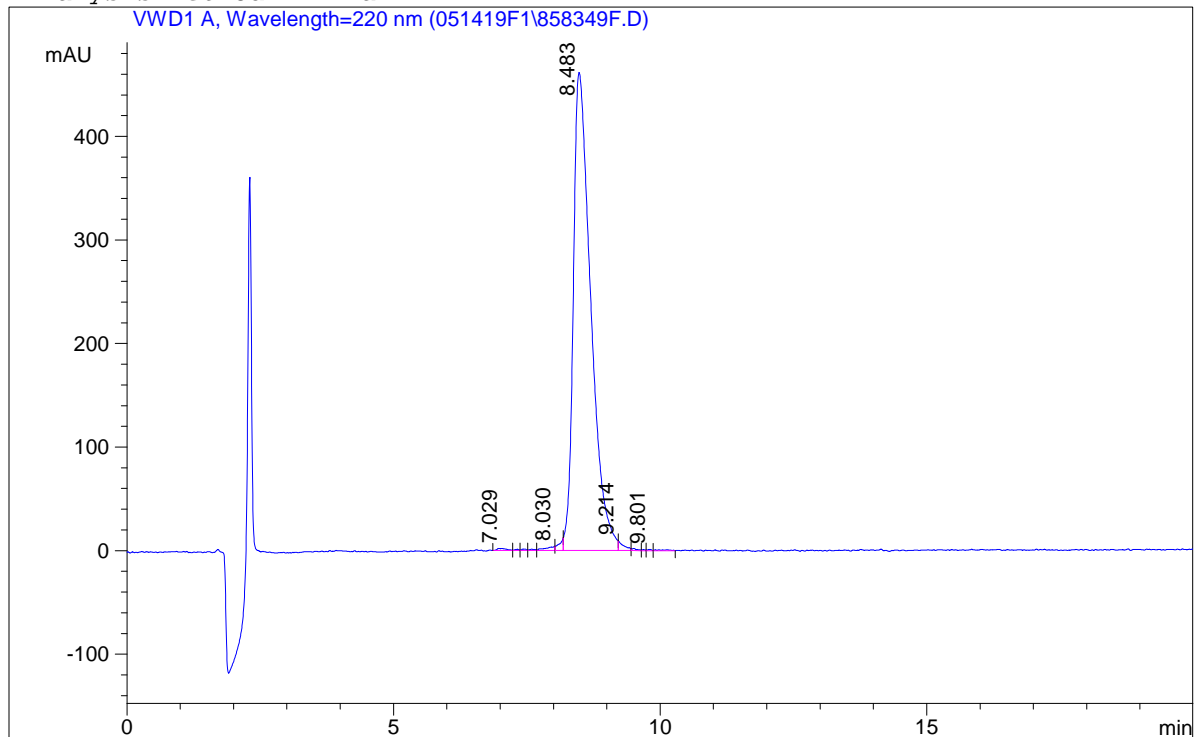
Flow:1.0mL/min 24.0%-34.0% B buffer in 20min

Column:Phenomenex-C18(2) luna 5um 100A 4.6*150mm A488#

```

=====
Injection Date   : 5/14/2019                Location    :      Vial 13
Sample Name     : Final                    Inj. Vol.   :      40 µl
Acq Operator    : WMM
Acq. Method    : Final.M
Analysis Method : Final
=====

```



Signal 1:VWD1 A, Wavelength=220 nm

Peak #	RT [min]	Type	Height	Width [min]	Area	Area %
1	7.029	BV	2.014	0.158	24.800	0.230
2	7.315	VV	1.088	0.089	6.101	0.057
3	7.441	VV	1.256	0.104	8.409	0.078
4	7.595	VV	1.257	0.103	9.227	0.086
5	7.967	VV	3.363	0.183	47.578	0.442
6	8.030	VV	4.120	0.257	63.547	0.590
7	8.483	VF	461.161	0.344	10505.769	97.547
8	9.214	VF	9.455	0.120	67.982	0.631
9	9.457	VV	1.579	0.150	14.229	0.132
10	9.688	VV	0.939	0.060	3.882	0.036
11	9.801	VV	1.186	0.080	6.043	0.056
12	10.126	VBA	0.852	0.183	12.339	0.115

```

=====
*** End of Report ***
=====

```