

Sample ID:874844 Lot#:CS-04-00098

Mobile Phase:A:0.1%TFA in H2O

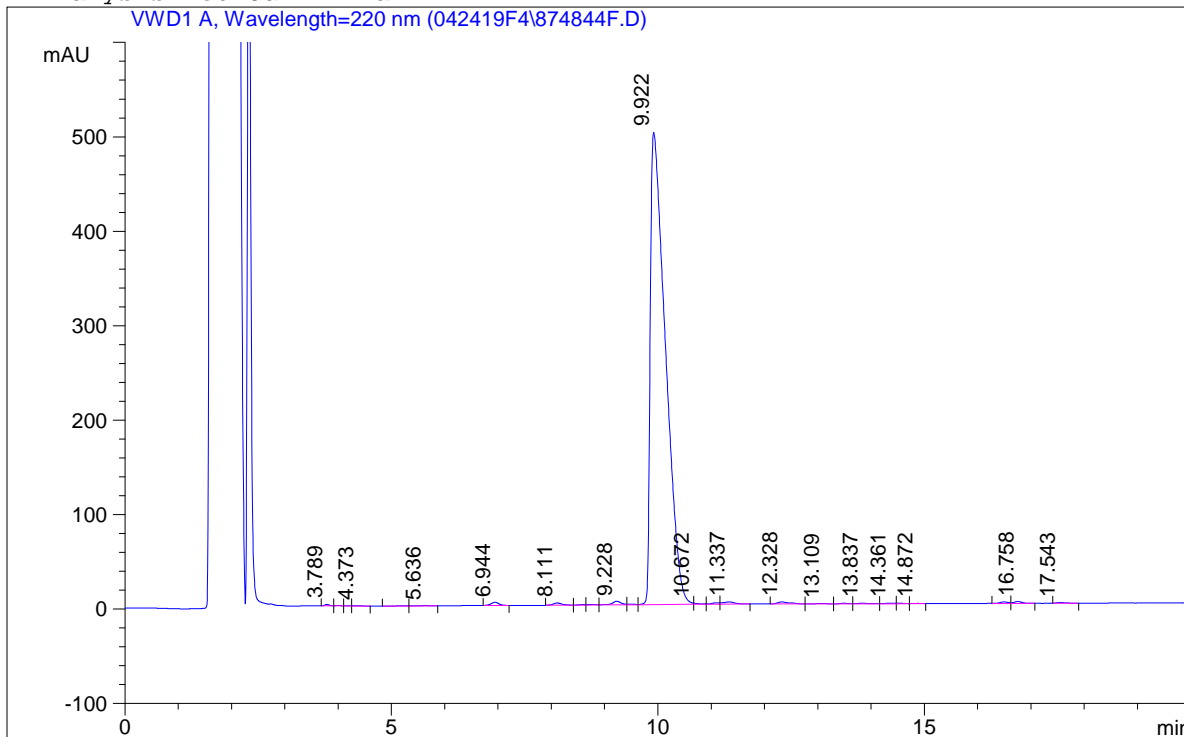
B:0.09%TFA in (80%ACN+20%H2O)

Flow:1.0ml/min 29.0%-39.0% B buffer in 20min

Column:SepaxGP-C18 5u 120A 4.6\*150mm A1230#

```

=====
Injection Date   : 4/24/2019                Location      :      Vial 1
Sample Name     : Final                    Inj. Vol.    :      40 µl
Acq Operator    : LJL
Acq. Method     : Final.M
Analysis Method : Final
=====
    
```



Signal 1:VWD1 A, Wavelength=220 nm

Peak #	RT [min]	Type	Height	Width [min]	Area	Area %
1	3.789	BV	1.657	0.093	9.892	0.097
2	3.999	VV	0.469	0.123	3.881	0.038
3	4.145	VV	0.271	0.095	1.879	0.018
4	4.373	VBA	0.393	0.139	3.516	0.034
5	5.176	VV	0.350	0.167	4.133	0.041
6	5.636	VP	0.416	0.189	5.491	0.054
7	6.944	BV	3.389	0.159	35.329	0.347
8	8.111	BP	2.371	0.174	27.606	0.271
9	8.581	VV	0.478	0.133	4.023	0.039
10	8.769	VV	0.579	0.169	6.352	0.062
11	9.228	VV	3.869	0.176	45.777	0.449
12	9.487	VV	0.727	0.145	7.051	0.069
13	9.922	MF	500.288	0.328	9853.788	96.688
14	10.672	FM	1.196	0.116	8.304	0.081
15	11.100	VV	1.528	0.153	15.399	0.151
16	11.337	VBA	2.235	0.230	35.128	0.345
17	12.328	BP	2.239	0.228	35.952	0.353
18	13.109	VV	0.384	0.251	6.998	0.069
19	13.488	VV	0.637	0.182	7.567	0.074
20	13.837	VV	0.597	0.241	10.079	0.099

Sample ID:874844 Lot#:CS-04-00098

Mobile Phase:A:0.1%TFA in H2O

B:0.09%TFA in (80%ACN+20%H2O)

Flow:1.0ml/min 29.0%-39.0% B buffer in 20min

Column:SepaxGP-C18 5u 120A 4.6\*150mm A1230#

```
=====>
```

Peak #	RT [min]	Type	Height	Width [min]	Area	Area %
21	14.361	VV	0.722	0.175	8.486	0.083
22	14.528	VP	0.498	0.141	4.525	0.044
23	14.872	VBA	0.309	0.167	2.891	0.028
24	16.493	VV	1.664	0.164	17.638	0.173
25	16.758	VBA	1.973	0.162	21.062	0.207
26	17.543	BP	0.729	0.183	8.556	0.084

```
=====
```

```
=====
```

\*\*\* End of Report \*\*\*